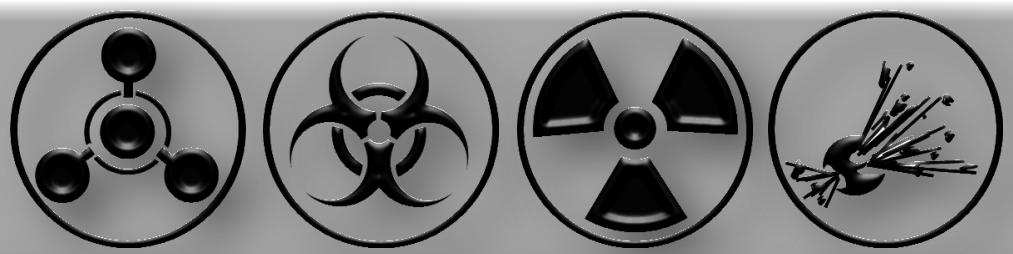




CBRNE Training Facilities



JOOC
JOINT OPERATIONS CENTER

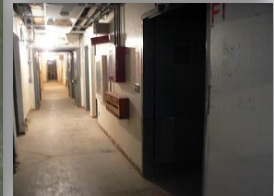


Advanced CBRNE Training

9 Story UF6 Bldg



The JOC is a former nuclear fuels reprocessing plant that has been converted into an all hazards training site. With much of the structures remaining complete, including control room, tanks, miles of pipes, etc.. The JOC can offer a real world training experience.



GTI in conjunction with Savannah River National Labs (SRNL) have the facilities and additional assets to offer the most advanced CBRNE training solutions available.



Separations Bldg





CBRNE Training at the JOC

Exploit various possible hazardous chemical, biological, radiological or explosive incidents for the purpose of being able to plan and execute a proper response

Scenario Based Training Facilitations for:

- Chemical agent production or incident
- Biological agent production or incident
- Radiological agent production or incident
- Nuclear agent production or incident
- Explosive production or incident
- IED rigged buildings and lanes
- Clandestine labs
- Confined space rescue/recovery
- Chemical and Biological WMD-Warfare
- Radiological WMD
- Industrial Agents WMD
- Asymmetrical Weapons
- Decontamination

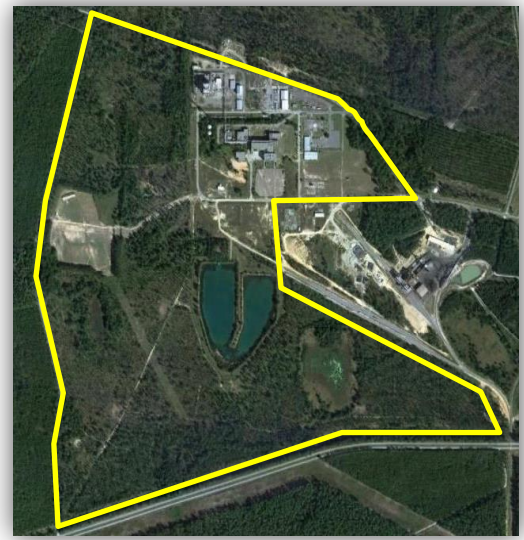




CBRNE Sensitive Site Exploitation

Full Site Access for:

- Sensitive Site Assessment
- Site Exploitation and Characterization
- Intelligence Collection
- Remote Sensor Operations
- Unconventional Warfare
- Tactical Information Operations





CBRNE Agent Operations

Real World Training Facilities to mimic small or large scale CBRNE production and operations.



- Chemical agent production
- Biological agent production
- Radiological agent production
- Nuclear agent production
- Explosive production to include IED rigged buildings and lanes





Advanced Defeat of Production Facilities

Disablement and characterizations of production scale facilities.

Scenarios can be designed to fit SOP, SOW or TTP of an individual team or unit. Utilization of hardware and processes that make up biological, chemical and radiological production plants.



Unit Designed Scenarios:

- Chemical and Biological WMD-Warfare
- Radiological WMD
- Industrial Agents WMD
- Asymmetrical Weapons
- Decontamination





Training & Facility Coordination



Contact:

Government Training Institute
South Carolina Office: (803) 259-1935

Email: info@gtitraining.org

Or Visit

Web: www.gtitraining.org

JOC
JOINT OPERATIONS CENTER